

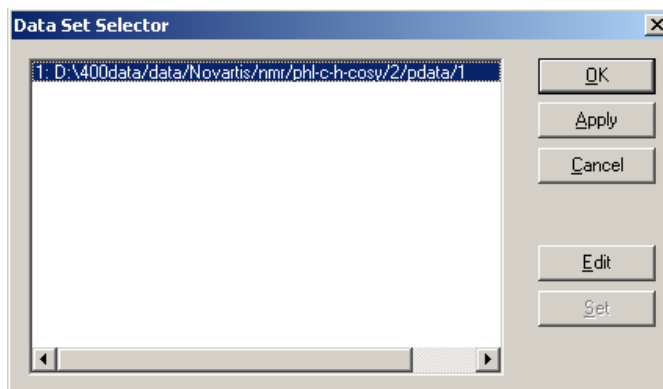
# Plotting a 2D COSY

revised 11-24-08

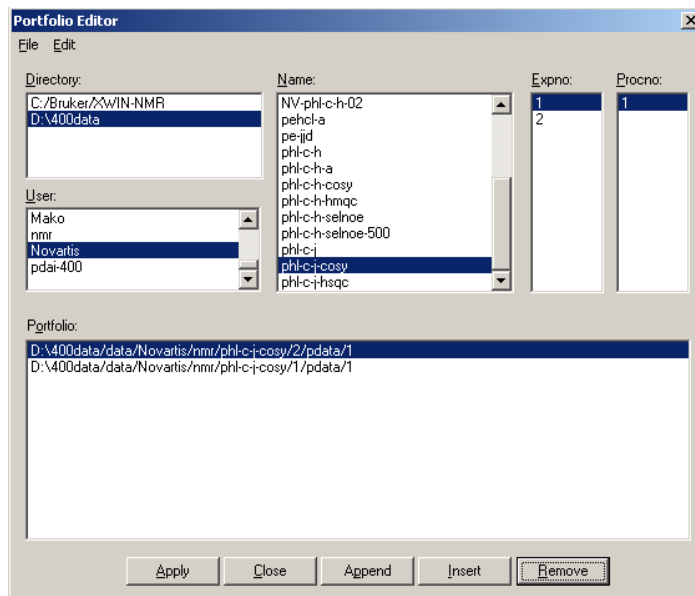
## 2-D COSY contour plot with Projections, Title and Parameters


1. Run a 1H and COSY as described elsewhere.
2. Open up Xwin Plot by typing “xwinplot”.
3. Click on File -> Open and open the “2d\_hom.xwp” file for a magnitude COSY. If you have a phase-sensitive COSY such as a DQF-COSY, then open “2d\_hom\_ph.xwp”.

4. Click on 



5. Click on Edit.



6. Find the 2D COSY data set.
7. Click on 
8. Find the 1D Proton spectrum and select the 1-D Proton spectrum file by clicking

on the experiment number once.

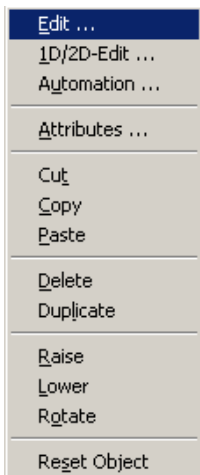
9. Click on 

10. Click on 

11. Click OK.

12. Move the crosshair into the contour plot area.

13. Click the right mouse button. Select 'Edit'



14. Select the Graph tab.

15. Make sure that  $X_{min}/X_{max} = Y_{min}/Y_{max} =$  your plot limits in ppm (e.g. 10 ppm and 0 ppm)

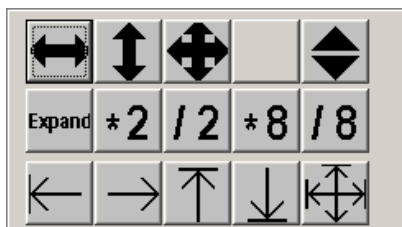
16. Click on the 2D Projections tab.

17. Click on the Select... button next to the Left Contour line and be sure the 1H dataset is selected.

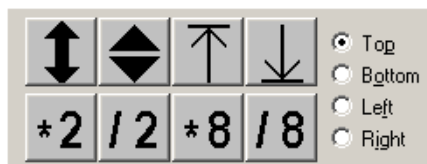
18. Click on OK.

19. Move the crosshair into the contour plot area.

20. Click the right mouse button and select '1D/2D-Edit'. The "Edit 2D Display Object" window appears. The icons in the upper part of the window, are for the adjustment of the contour display. The icons in the middle of the window are for the adjustment of the projection.

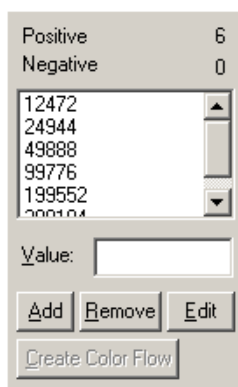


21. Use the buttons to adjust the 2D contour levels.



22. Use the buttons to adjust the scaling of the projections. Be sure to adjust the Top and Left projections equally!!

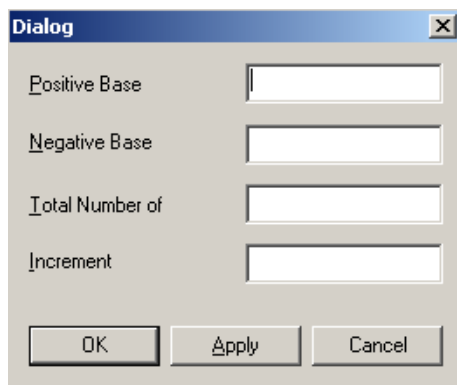
23. To fill in the contours better, select the smallest number in contours box.



24. Highlight it where it says “value” and press CTRL-C to copy that value.

25. Click on Edit.

26. Press CTRL-V to paste that value in the Positive Base. Leave Negative Base blank unless you have a phase-sensitive COSY, then enter that same value, only negative, into the Negative Base. Enter “15” for Total Number of and enter “1.5” for Increment. Click OK.



27. Click on OK.

